

Structure Samples at Jana Elementary

November 15, 2022

What We Did:

- Structural surface surveys and sampling efforts were conducted at Jana Elementary School October 24 - October 28, 2022.
 - **Total number of results:** 922.

What We Looked For:

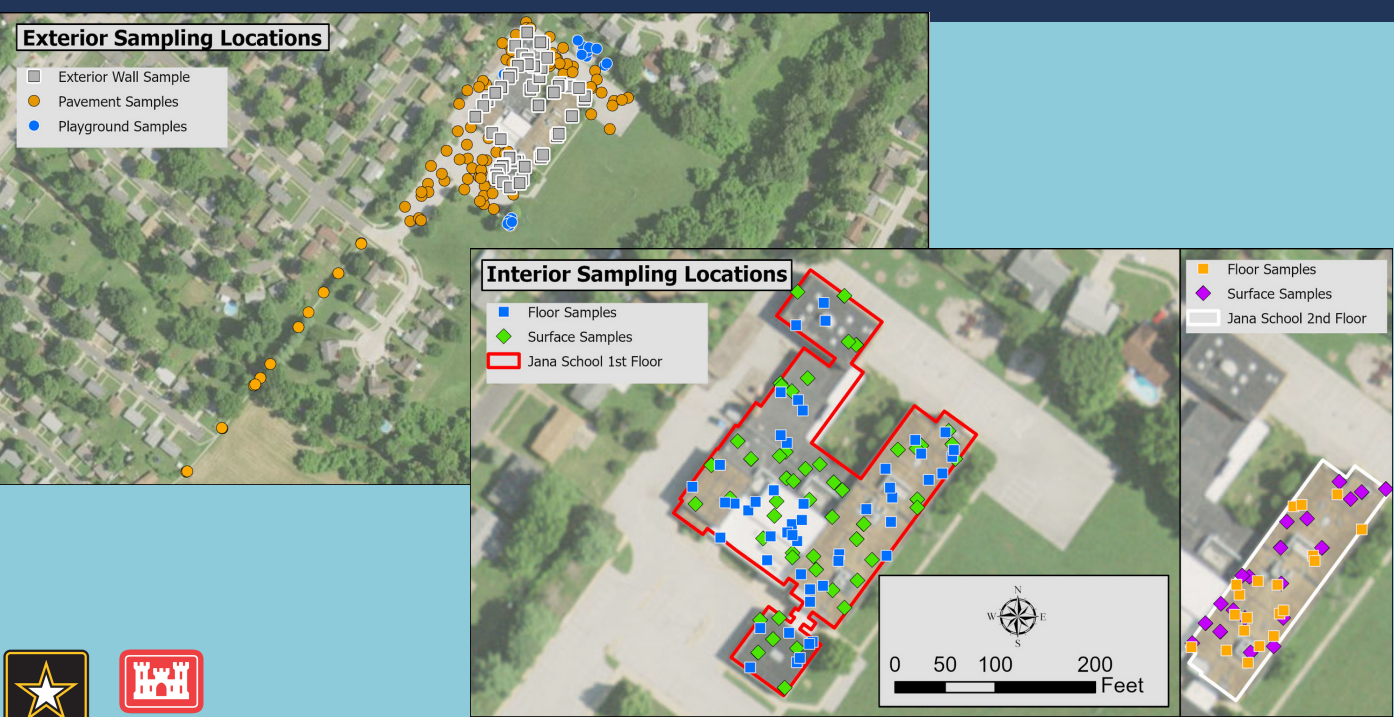
- Surveys and sampling was conducted to look for radiological contamination on accessible floor surfaces, walls, furniture, equipment, countertops, exterior pavement, exterior walls, a walkway, and playground equipment.

What We Found:

- Preliminary results show no presence of radioactive material above the expected range of background levels (the level of radioactivity Mother Nature already provides).
- Lead-210 results are within the expected range of background levels and do not pose a health risk.

What It Means:

- From a radiological standpoint, the school is safe.
- No radioactive material or contamination exceeded the expected range of natural background levels.



Key Takeaways:

- The lead-210 identified at Jana Elementary results from background levels of radon gas decaying through to lead-210.
- There are no areas of radiological concern in and around the school.

Structure Surfaces Data Summary										
Type of Surface	Alpha Radioactivity (dpm/100 cm ²)					Beta Radioactivity (dpm/100 cm ²)				
	Fixed-Point Measurements				Swipes	Fixed-Point Measurements				Swipes
	Number	Mean	Max	Results ^a	Results ^b	Number	Mean	Max	Results ^a	Results ^b
Floors	124	53	262	< RG	< MDA	124	115	678	< RG	< MDA
Interior Walls Tile, Brick	29	91	295	< RG	< MDA	29	785	2,975	< RG	< MDA
Interior Walls Other	82	68	208	< RG	< MDA	82	118	830	< RG	< MDA
Exterior Walls	57	36	97	< RG	< MDA	57	1,095	2,308	< RG	< MDA
Playground Equipment	25	52	137	< RG	< MDA	25	325	1,026	< RG	< MDA
Asphalt	106	70	206	< RG	< MDA	106	454	1,029	< RG	< MDA
Concrete	38	139	280	< RG	< MDA	38	765	1,534	< RG	< MDA

a Comparison to the remediation goal (RG). Gross Alpha RG = 2800 dpm/100cm². Gross Beta RG = 6000 dpm/100cm².

b Minimum detectable activity (MDA): lowest value that could be detected for a sample. Highest MDAs for alpha and beta were 6.14 and 8.5 dpm/100 cm², respectively.

